

Planetary Centrifugal Mixer
THINKY MIXER
ARM-310



Reproducibility, Homogeneity, Effectivity by 400G

- ✓ Mixing a wide range of materials from low to high viscosity
- ✓ Shortening the time for mixing and improving overall working process
- ✓ For Beginner Users of Planetary Centrifugal Mixer
- ✓ The Cheapest Mixer Model handled by THINKY
- ✓ If your material does not require "Defoam mode" (*1), ARM-310 is the best choice.

*1 "Defoam mode" is a mode unique to THINKY MIXER and focuses on defoaming after mixing.

Maximum
capacity

310g

Standard
container

300 ml
resin
container

30 standard adapters & 150 adapters

THINKY provides original containers and adapters to fit the characteristics of the material.
We produce more than 150 custom-made adapters a year to meet customer needs.



Simple Operation

- 1- Place the container and material* into the unit. Adjust the weight balance**.
- 2- Use the memory and timer to set the number of rotations and mixing time, and switch on.
- 3- High quality mixing completes in a short time.

*Container types differ according to the model

**Adjust the weight balance to take account of the material weight, container and adapter.



Optional

ENS-10

Cooling system for THINKY MIXER

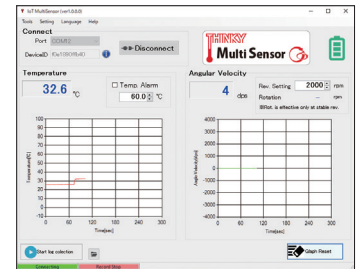
ARM-310 can be operated continuously by exhaust heat



Multi-Sensor

Material temperature and speed can be measured in real time

Data transfer to PC via Bluetooth connection



Display image

Specifications(ARM-310CE)

| | |
|------------------------|--|
| Product Name | Planetary centrifugal mixer "THINKY MIXER" |
| Model | ARM-310 |
| System | Planetary, propeller-less mixing |
| Operation Time Setting | Timer setting range: 0 s to 30 min in 1 s increments |
| Programming Function | STD mode: 5 memories with 1 step STEP mode: 5 memories with 5 steps |
| Revolution speed (rpm) | STD mode (2000 rpm fixed) STEP mode (0, 200-2000 rpm) |
| Rotation Speed (rpm) | Max. 800 rpm |

| | | |
|-----------------------|---|---|
| Maximum Capacity | 310g | |
| Standard Container | 300 ml resin container | |
| Power Supply | Voltage | Single-phase AC120 V ± 10%, 50 / 60 Hz |
| | Power Consumption | Approx. 50 VA (standby) Max 900 VA (operation) |
| Operating Environment | 10 to 35 °C, 35 to 85 % RH (without condensation) | |
| Unit Dimensions | H390 × W300 × D340 (mm) | |
| Unit Weight | Approx. 21 kg | |

Product appearance/specifications may change without notice.

THINKY CORPORATION

Headquarters: 2-16-2 Sotokanda, Chiyoda-ku, Tokyo 101-0021
Phone : +81-3-5207-2713 Fax : +81-3-5289-3281

THINKY USA Inc. : 23151 Verdugo Drive, Suite 112 Laguna Hills, CA 92653, USA

THINKY CHINA: East building, HaiAn Kafunuo Mansion, Shennan road,
Qianhai road, Nanshan district, Shenzhen

<https://www.thinkymixer.com/en-gl/>

Sales agent